

## Important -- Please Read!

**Your Lift/Elevator has not been placed into production yet...**



**In order for us to start production on the Lift or Elevator, the following items must be completed.**

**Project: Tucker Free Library Replace**

**Product: GSL Artira**

The following items must be completed before Garaventa can release this lift to production:

- Payment per schedule of values
- Documentation of variance (Low Overhead & Lift Capacity)
- Approve submittal drawings

Please specify the anticipated date that the lift is needed for installation, and/or any completion deadline that we should be aware of. Garaventa will secure the equipment as required to meet the anticipated schedule whenever possible - provided that the necessary items have been completed as outlined above. We have very limited ability to store equipment, and as such any storage of materials needed beyond two weeks will be assessed a storage fee of \$300.00 a month.

Please call me at **1-888-624-5438** ext# 204, or 603-759-2276 (cell) with any questions you may have. My e-mail is **kevin.mudgett@garaventlift.com**.

Additionally, please contact me to arrange a site meeting when you begin framing the area so that we can review the drawings and requirements.

Kevin Mudgett  
Garaventa USA  
603-669-6553 xt# 204, Cell: 603-759-2276



# SUBMITTAL COVER SHEET

## Tucker Free Library Replace

GSL Artira

GSL Artira

**Owner:**

Tucker Free Library

31 Western Avenue

Henniker, NH 03242-0688

**Architect:**

DRAWINGS HAVE BEEN REVIEWED AND FOUND THAT THEY ARE: (CHECK/SELECT ONE)

- ACCEPTED AS DRAWN, - NO CHANGES.
- ACCEPTED AS NOTED. PLEASE MAKE LISTED CHANGES. NO RESUBMITTAL NECESSARY.
- NOT ACCEPTED. PLEASE REVISE AS NOTED AND RE-SUBMIT DRAWINGS FOR APPROVAL

SIGNED BY: \_\_\_\_\_ DATE: \_\_\_\_\_

MODERNIZATION / REBUILD PROJECT:

- ALL RAILS/TUBES AND POSTS REMAIN.
- DRIVE BOX, MOTOR, CONTROLLER, SUSPENSION ROPES, CONVEYANCE ARE ALL NEW.

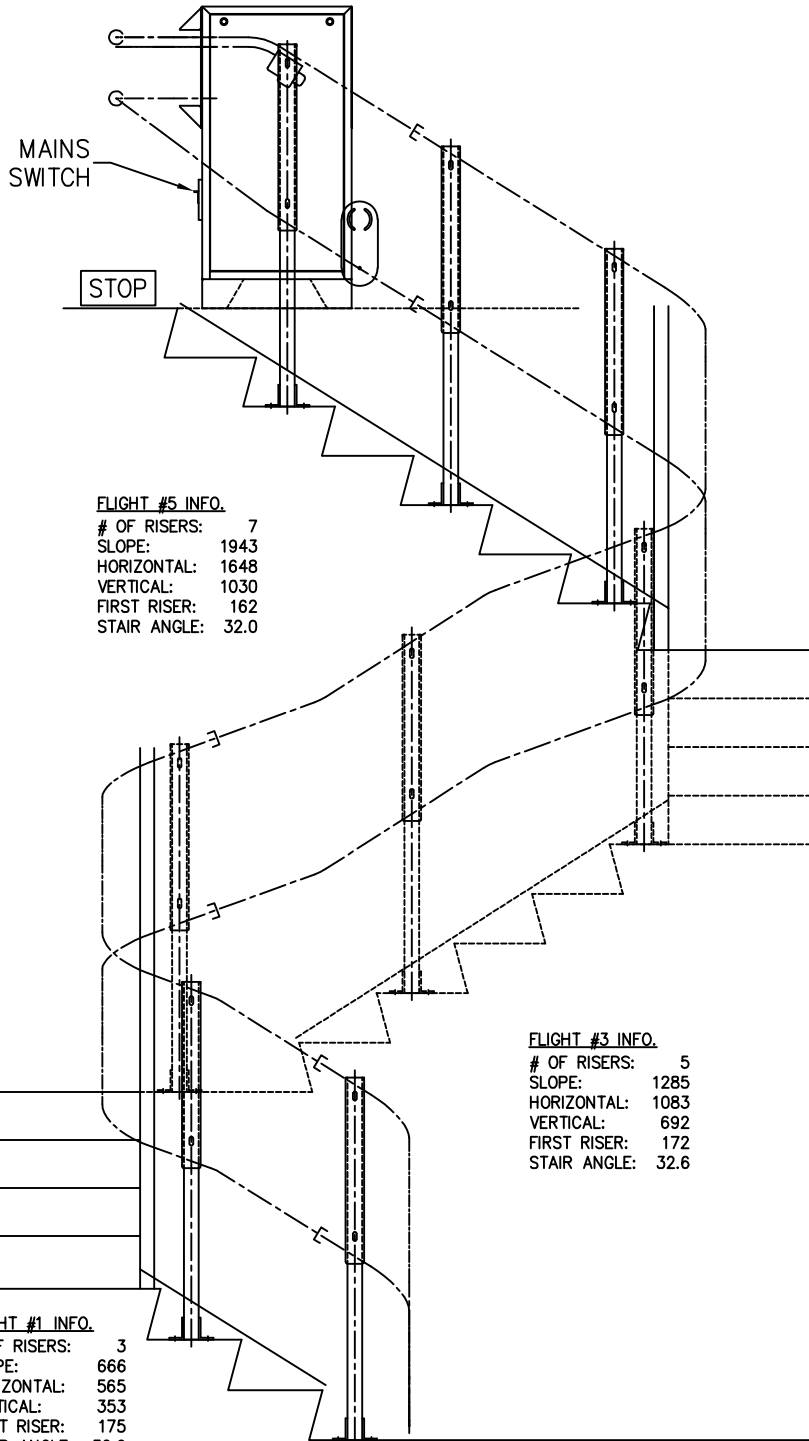
VARIANCE REQUIRED FOR THE FOLLOWING:

- LOW OVERHEAD CLEARANCE: BOARDING LIFT AT LOWER LANDING (LESS THAN 79")
- LOW OVERHEAD CLEARANCE: FLIGHT #3 - LESS THAN 60" CLEAR DURING TRAVEL
- LOW OVERHEAD CLEARANCE: FLIGHT #4 - LESS THAN 60" CLEAR DURING TRAVEL
- LOW OVERHEAD CLEARANCE: FLIGHT #5 - LESS THAN 60" CLEAR DURING TRAVEL
- LOW OVERHEAD CLEARANCE: FLIGHT #5 - LESS THAN 79" FOR BOARDING LIFT AT TOP LANDING
- LIFT CAPACITY: LESS THAN 550 LBS. (450 LBS MAXIMUM AS DESIGNED)

NOTES:

- Approval must be obtained from your local building department for lift and confirming that there is sufficient egress remaining per building code. Approval and/or any local permits are the responsibility of others.

A	INITIAL RELEASE	UNITS: INCHES	04/08/22				
REV.	SCALE: 1:20	TOLERANCES: DIMENSIONAL ±1/16	ANGULAR ±0.5°	PROJECTION: 	DATE	DRN.BY	CHK.BY
		18920 36TH AVENUE SURREY, BC, CANADA V3Z 0P6 PH: ++1 604 594 0422 FAX: ++1 604 594 9915 <a href="http://www.garaventalift.com">http://www.garaventalift.com</a>		GSL ARTIRA APPROVAL DRAWING TUCKER FREE LIBRARY		90-0857-45	
				HENNIKER NH 03242	PAGE 1 of 1		
				Garaventa NE			



FLIGHT #5 INFO.

# OF RISERS: 7  
 SLOPE: 1943  
 HORIZONTAL: 1648  
 VERTICAL: 1030  
 FIRST RISER: 162  
 STAIR ANGLE: 32.0


FLIGHT #3 INFO.

# OF RISERS: 5  
 SLOPE: 1285  
 HORIZONTAL: 1083  
 VERTICAL: 692  
 FIRST RISER: 172  
 STAIR ANGLE: 32.6

FLIGHT #1 INFO.

# OF RISERS: 3  
 SLOPE: 666  
 HORIZONTAL: 565  
 VERTICAL: 353  
 FIRST RISER: 175  
 STAIR ANGLE: 32.0

A	INITIAL RELEASE	UNITS: INCHES	04/08/22	
REV.	SCALE: 1:20	TOLERANCES: DIMENSIONAL ±1/16	ANGULAR ±0.5°	PROJECTION:
			DATE	DRN.BY

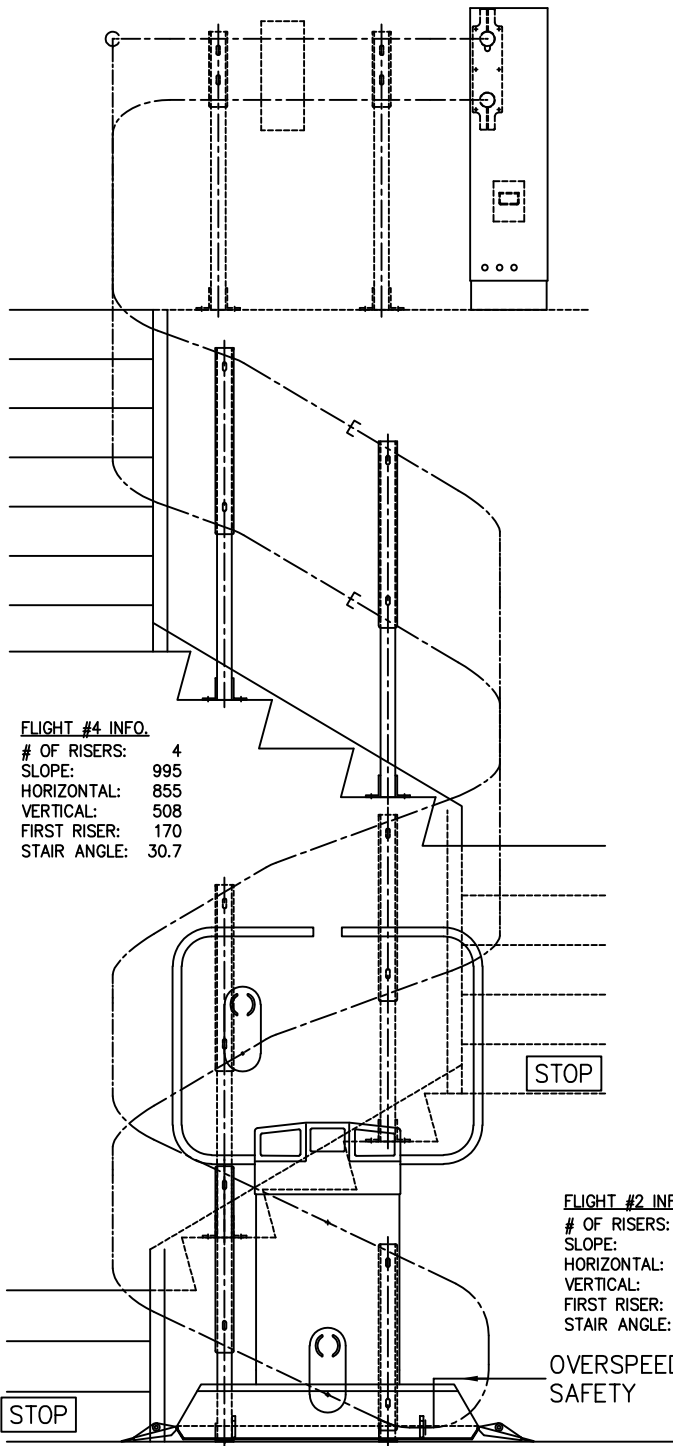


18920 36TH AVENUE  
 SURREY, BC, CANADA V3Z 0P6  
 PH: ++1 604 594 0422  
 FAX: ++1 604 594 9915  
<http://www.garaventalift.com>

GSL ARTIRA APPROVAL DRAWING  
 TUCKER FREE LIBRARY  
 HENNIKER NH 03242  
 Garaventa NE

PAGE 2 of 10


93570-AD-A  
90-0857-45



**FLIGHT #4 INFO.**  
 # OF RISERS: 4  
 SLOPE: 995  
 HORIZONTAL: 855  
 VERTICAL: 508  
 FIRST RISER: 170  
 STAIR ANGLE: 30.7

**FLIGHT #2 INFO.**  
 # OF RISERS: 4  
 SLOPE: 985  
 HORIZONTAL: 847  
 VERTICAL: 502  
 FIRST RISER: 185  
 STAIR ANGLE: 30.7

A	INITIAL RELEASE	UNITS: INCHES	04/08/22	
REV.	SCALE: 1:20	TOLERANCES: DIMENSIONAL ±1/16	ANGULAR ±0.5°	PROJECTION:
			DATE	DRN.BY

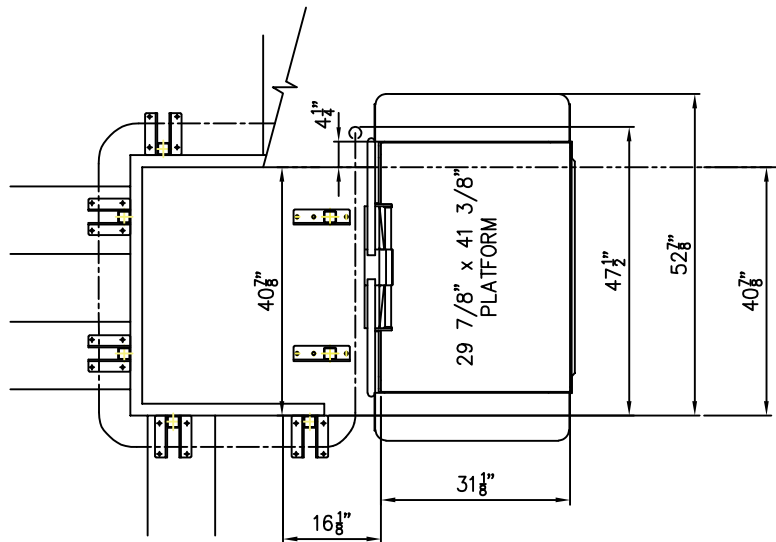
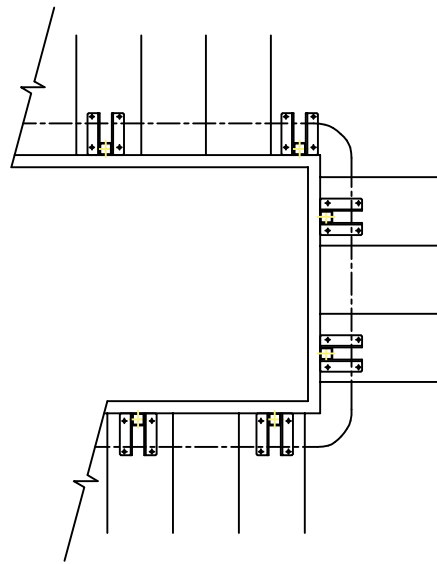
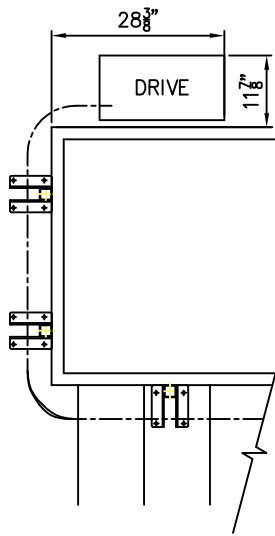


18920 36TH AVENUE  
 SURREY, BC, CANADA V3Z 0P6  
 PH: ++1 604 594 0422  
 FAX: ++1 604 594 9915  
<http://www.garaventalift.com>

GSL ARTIRA APPROVAL DRAWING  
 TUCKER FREE LIBRARY  
 HENNIKER NH 03242  
 Garaventa NE

PAGE 3 of 15

93570-AD-A  
90-0857-45



A	INITIAL RELEASE	UNITS: INCHES	04/08/22				
REV.	SCALE: 1:20	TOLERANCES: DIMENSIONAL ±1/16	ANGULAR ±0.5°	PROJECTION:	DATE	DRN.BY	CHK.BY
		18920 36TH AVENUE SURREY, BC, CANADA V3Z 0P6 PH: ++1 604 594 0422 FAX: ++1 604 594 9915 <a href="http://www.garaventalift.com">http://www.garaventalift.com</a>		GSL ARTIRA APPROVAL DRAWING TUCKER FREE LIBRARY HENNIKER NH 03242 Garaventa NE		PAGE 4 of 16 93570-AD-A 90-0857-45	

# GSL ARTIRA UPGRADED STAIRLIFT SPECIFICATIONS

Code Reference: – ASME A18.1 2020: Safety Standard for Platform Lifts and Stairway Chairlifts

Emergency Devices: – Emergency stop switch near platform controls

- Under platform sensing
- Ramp sensing
- Emergency manual lowering and folding
- Pedestrian safety lights on platform

Safeties: – Final upper limit

- Electrical and mechanical overspeed safety

Location: – Indoor Lift

Color: – Durable, electrostatically applied and baked Cool grey paint

Finish (EXISTING): – All Mild Steel tubes and/or towers Painted

Platform: – 16 ga. galvanized steel plate deck

- Deck finish: electrostatically applied non-slip black sandex powder coat
- Grub bars
- Curved safety arms
- Folding 5 7/8" Kickplate
- 7 7/8" Ramps
- 0 Sec. (std.) Change of Direction Delay
- Keypass Platform
- Painted Aluminum Sensing Plate

Platform Options: – 29 7/8" x 41 3/8" Platform Deck

- Platform Security Lock
- On Board Alarm with Illuminated Emergency Stop (w/ Batt. Backup)
- Folding Seat
- Under Hanger Sensing
- Side/Back Hanger Sensing
- Plug-in Attendant Remote Control and Socket
- Maximum 450 lb Operating Load

Capacity: – Maximum 450 lb Operating Load

Drive: – Painted Mild Steel Drive Box (RH)

- Drive box dimensions: 20 1/2" x 10 5/8" x 41 1/2" high
- Operates via drive cog and roped sprocket using 5/16" wire haul rope

Motor: – 2.0 HP

Power Supply: – 208–240 VAC, single phase, 50/60 Hz, on a dedicated 20 amp. circuit

Travel Speed: – 20 feet/minute, slowing prior to corners and when approaching or departing landings

Call Stations: – Upper and Lower Call Stations

- Touch-sensitive platform call buttons and platform & ramp power fold buttons with Smart-Lite technology

Call Station Options: – 0 Intermediate Stop(s) with Call Station(s)

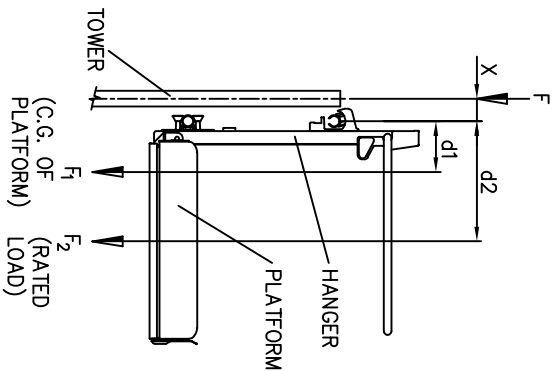
- Keypass Operation

Audio/Visual Alerts: – 1 Mild Steel A/V Alert(s)

Tubes and Towers: – 2" O.D. x 0.120" Wall Mild Steel Lift Tubes (EXISTING)

- Mild Steel Support Towers
- 2" O.D. x 0.120" Wall Mild Steel Lift Tubes
- Mild Steel Support Towers

Additional Information: – Refer to the Garaventa Design & Planning Guide or consult your local dealer



STRAIGHT LIFTS AND/OR LIFTS WITH INSIDE RADIUS BENDS:

(Loads are based on a 31 1/2" x 48" platform & 660 LB OPERATING LOAD)

- F<sub>1</sub>: 246 lbf
- F<sub>2</sub>: 661 lbf
- D<sub>1</sub>: 11 5/8"
- D<sub>2</sub>: 19 7/8"

MOMENT AT CENTER OF TOWER

- M = F x d (F: Force; d: Distance)
- M = F<sub>1</sub> x (d<sub>1</sub>+X) + F<sub>2</sub> x (d<sub>2</sub>+X)

TOWER MOUNT

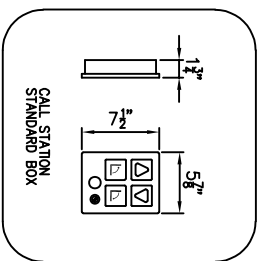
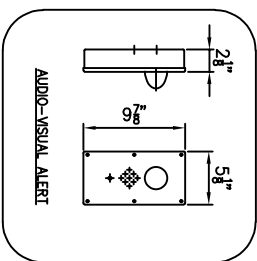
X is 3 5/8" minimum to 13" maximum

DIRECT MOUNT

X is 4.0" minimum to 5 1/2" maximum

MAXIMUM MOMENT

- M = 27827 lbf in. with tower mount
- M = 21041 lbf in. with direct mount



**DEDICATED CIRCUIT SUPPLIED BY OTHERS:**  
208–240 vac / 1 PHASE – 50/60 Hz.  
Conduit and devices to suit local codes and a recommended 20 amp. dedicated circuit.

1 INITIAL RELEASE	TOLERANCES: DIMENSIONAL ±1/16	UNITS: INCHES	04/08/22
REV SCALE: 1:20	ANGULAR ±0.5°	PROJECTION: 1st	DRAWN: CHERRY

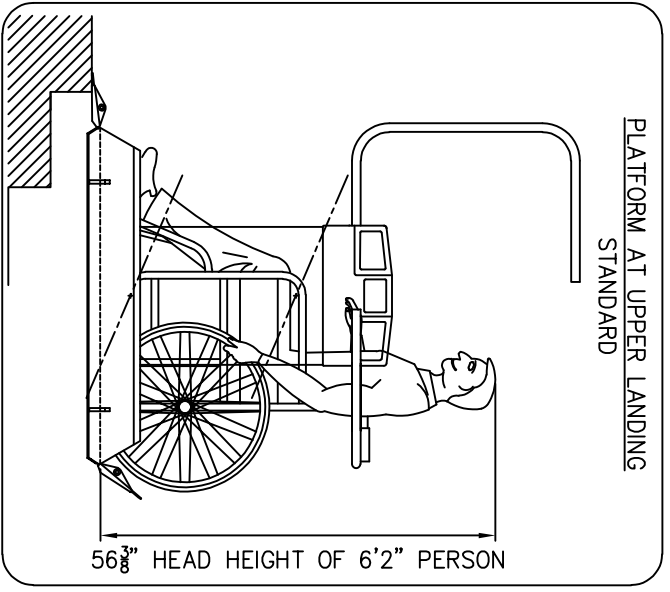
18920 36TH AVENUE  
SURREY, BC, CANADA V4Z 0P6  
PH: +1 604 594 0622  
FAX: +1 604 594 5915  
http://www.garaventalifts.com

GARAVENTA LIFTS

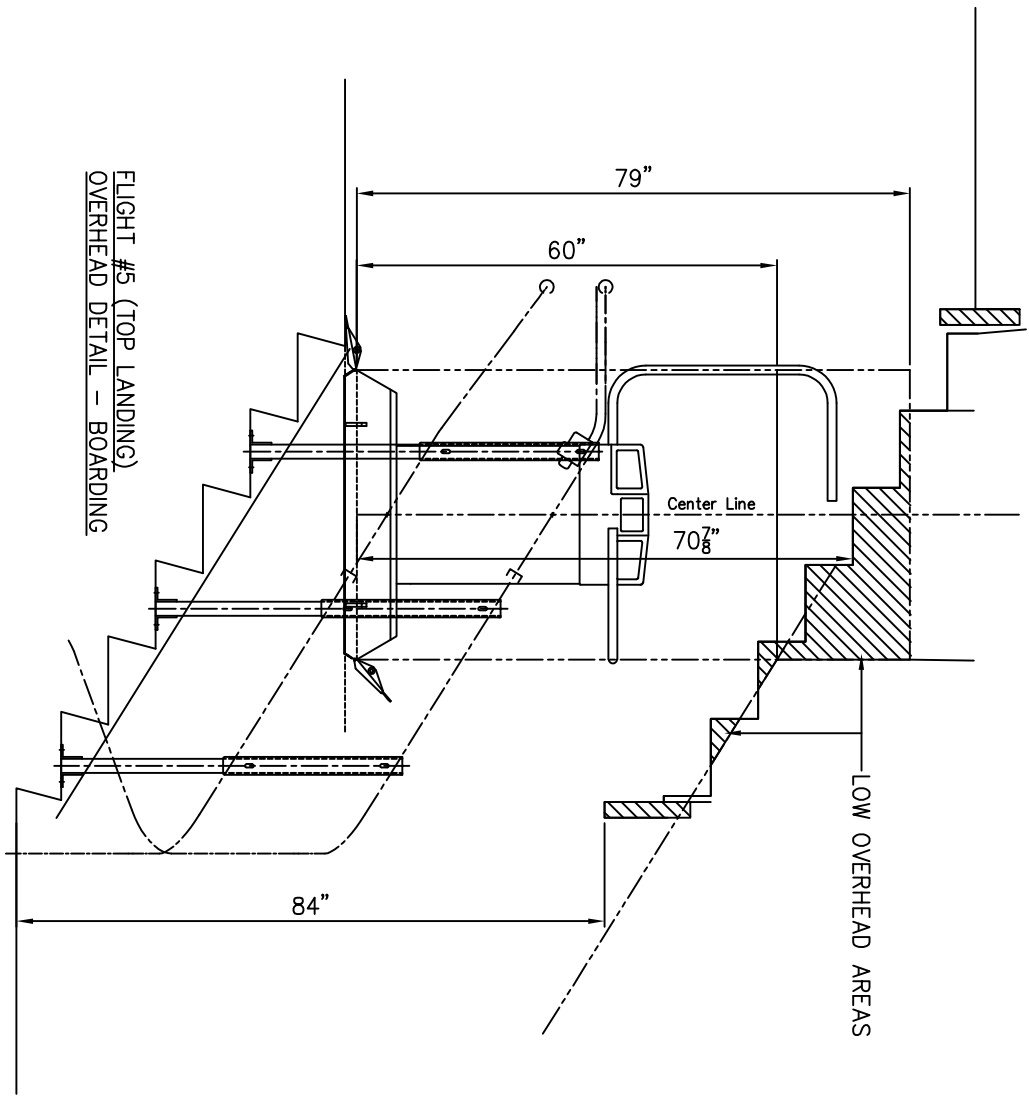
GSL ARTIRA APPROVAL DRAWING  
TUCKER FREE LIBRARY  
HENNIKER NH 03242  
Garavento NE

PAGE 5 of 165

93570-AD-A



TYPICAL DETAIL - WHEELCHAIR ON PLATFORM



A	INITIAL RELEASE	UNITS: INCHES	04/08/22
REV.	SCALE: 1:20	PROJECTION:	DRN.BY
	TOLERANCES: DIMENSIONAL ±1/16	ANGULAR ±0.5	CHK.BY

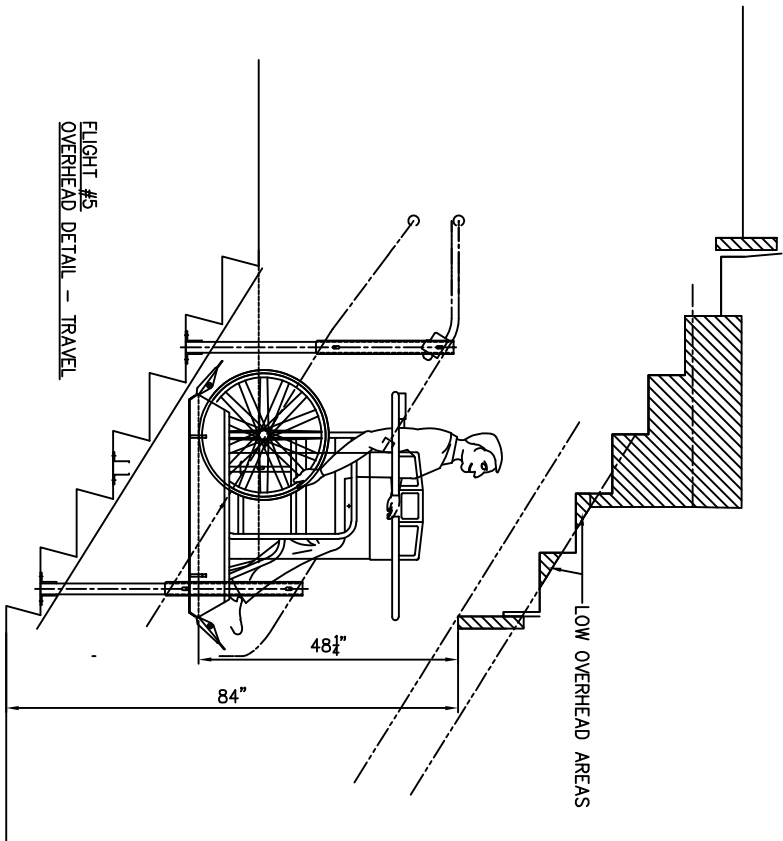
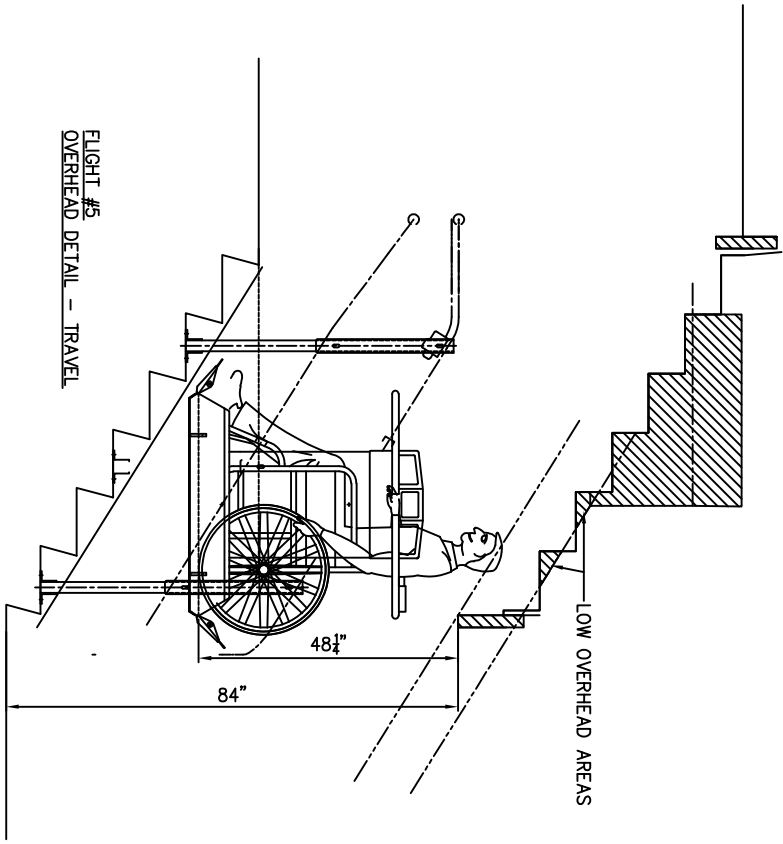
**GARAVENTA LIFT**

18920 36TH AVENUE  
SURREY, B.C. CANADA V3Z 0P6  
PH: ++1 604 594 0422  
FAX: ++1 604 594 9915  
<http://www.garaventalift.com>

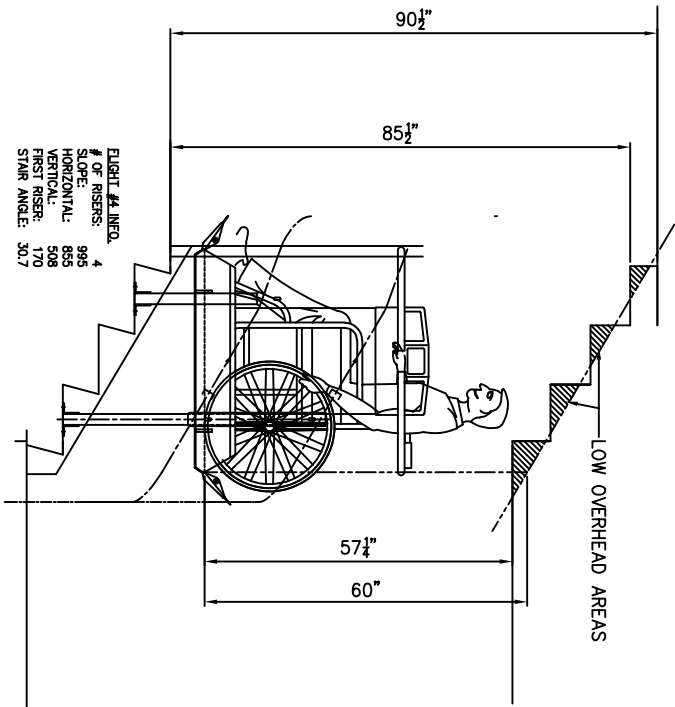
GSI ARTIRA APPROVAL DRAWING  
TUCKER FREE LIBRARY  
HENNIKER NH 03242  
Garaventa NE

93570-AD-A  
90-0857-45  
PAGE 6 of 10



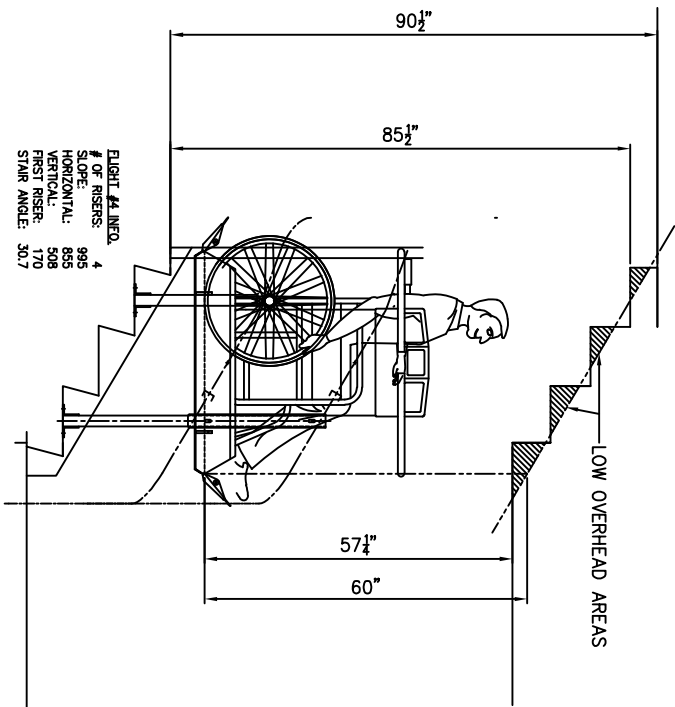


REV. SCALE: 1:20	TOLERANCES: DIMENSIONAL .1/16	ANGULAR .0.5°	UNITS: INCHES	DATE	04/08/22
GSI, ARTIRA APPROVAL DRAWING			PROJECTION:	DATE	
TUCKER FREE LIBRARY			PROJECTION:	DATE	
HENNIKER NH 03242			PROJECTION:	DATE	
Garveria NE			PROJECTION:	DATE	
GARAVENTIA LIFT			PROJECTION:	DATE	
18920 36TH AVENUE			PROJECTION:	DATE	
SUITE 100 BOX 504 0242			PROJECTION:	DATE	
TEL: +1 604 294 9915			PROJECTION:	DATE	
FAX: +1 604 294 9915			PROJECTION:	DATE	
http://www.garventia.com			PROJECTION:	DATE	
93570-AD-A			PROJECTION:	DATE	
90-0857-05			PROJECTION:	DATE	
PAGE 7 of 16			PROJECTION:	DATE	




FLIGHT #4 INFO.  
 # OF RISERS: 4  
 SLOPE: 98.9  
 HORIZONTAL: 858  
 VERTICAL: 508  
 FIRST RISER: 170  
 STAIR ANGLE: 30.7

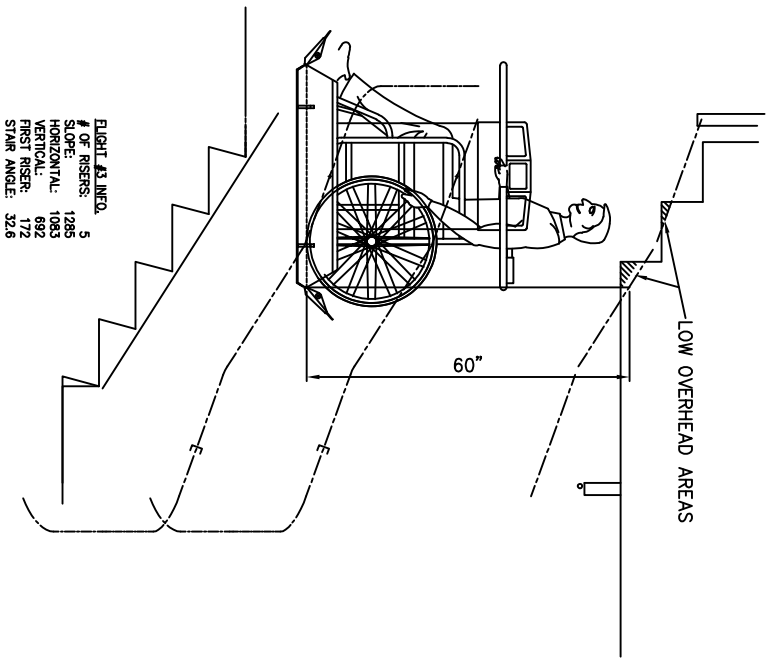
FLIGHT #4  
 OVERHEAD DETAIL - TRAVEL



FLIGHT #4 INFO.  
 # OF RISERS: 4  
 SLOPE: 98.9  
 HORIZONTAL: 858  
 VERTICAL: 508  
 FIRST RISER: 170  
 STAIR ANGLE: 30.7

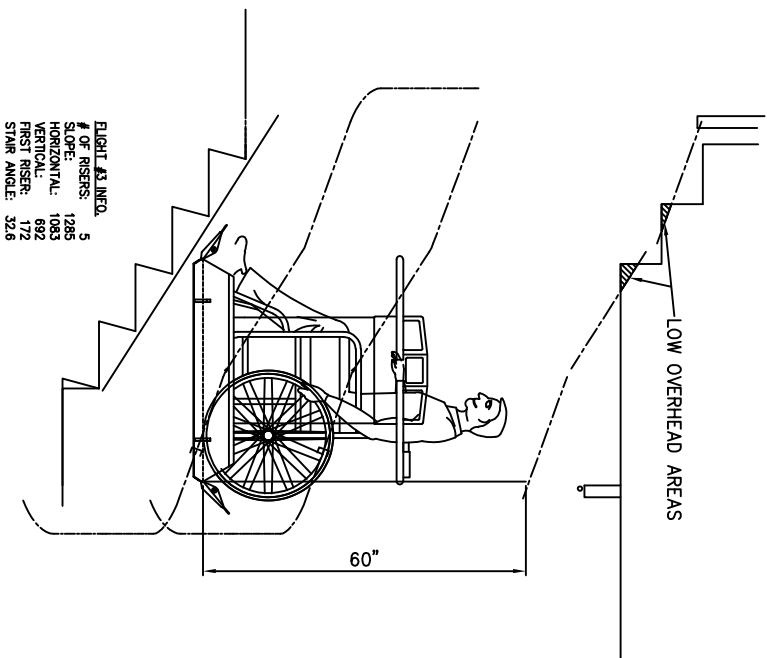
FLIGHT #4  
 OVERHEAD DETAIL - TRAVEL

REV. A	INITIAL RELEASE	TOLERANCES: DIMENSIONAL ±1/16	ANGULAR ±0.5°	UNITS: INCHES	DATE: 04/08/22	DRN BY: [initials]	CHK BY: [initials]
REV. SCALE: 1:20		PROJECTION: [first angle symbol]		GSI, ARTIRA APPROVAL DRAWING		93570-AD-1	
 18920 36TH AVENUE SUITE 100A GARFIELD NJ 07626 TEL: +1 604 594 9815 FAX: +1 604 594 9815 <a href="http://www.garventialift.com">http://www.garventialift.com</a>		TUCKER FREE LIBRARY		HENNIKER NH 03242		PAGE 8 OF 16	
		Covovento NE					



FLIGHT #3, INFO.  
 # OF RISERS: 5  
 SLOPE: 1285  
 HORIZONTAL: 1083  
 VERTICAL: 892  
 FIRST RISER: 172  
 STAIR ANGLE: 32.6

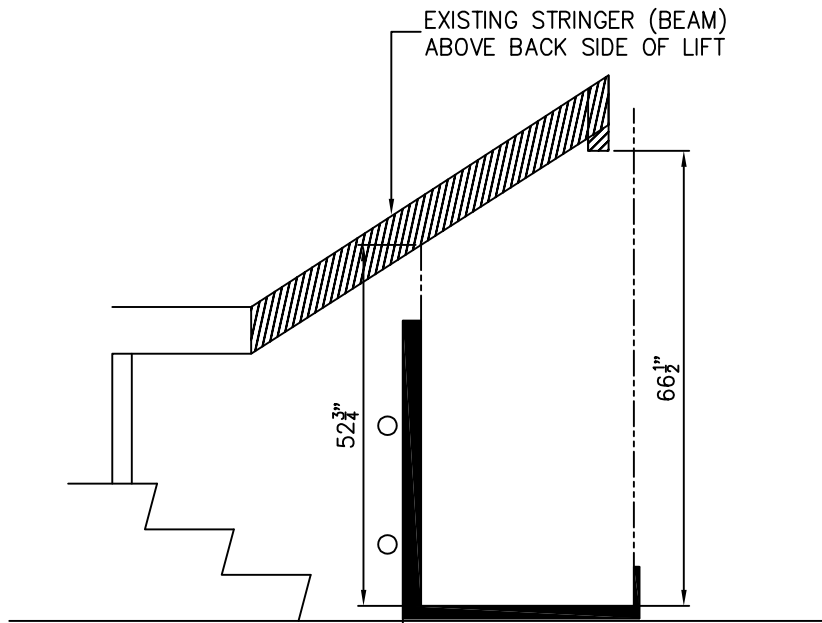
FLIGHT #3  
 OVERHEAD DETAIL - TRAVEL



FLIGHT #3, INFO.  
 # OF RISERS: 5  
 SLOPE: 1285  
 HORIZONTAL: 1083  
 VERTICAL: 892  
 FIRST RISER: 172  
 STAIR ANGLE: 32.6

FLIGHT #3  
 OVERHEAD DETAIL - TRAVEL

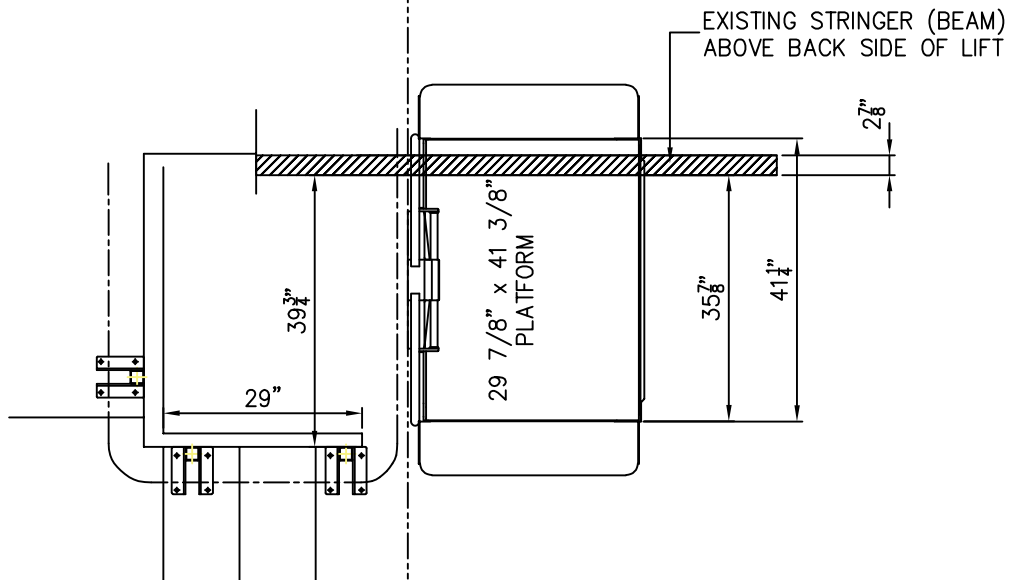
REV. A	INITIAL RELEASE	DIMS. INCHES	04/08/22	90-0857-45
REV. SCALE: 1:20	TOLERANCES: DIMENSIONAL: ±1/16 ANGLULAR: ±0.5°	PROJECTION:	DATE	DRN/CHK BY
		GSI, ARTIRA APPROVAL DRAWING TUCKER FREE LIBRARY HENNIKER NH 03242 Concord, NH		
18920 36TH AVENUE SUITE 100 CONCORD NH 03301 TEL: +1 604 394 9115 FAX: +1 604 394 9115 http://www.garventia.com		PAGE 9 OF 16 93570-AD-1A		



EXISTING STRINGER (BEAM)  
ABOVE BACK SIDE OF LIFT

52 3/4" 66 1/2"

BOTTOM LANDING – PARK  
ELEVATION VIEW – OVERHEAD DETAIL



EXISTING STRINGER (BEAM)  
ABOVE BACK SIDE OF LIFT

29 7/8" x 41 3/8" PLATFORM

39 3/4" 29" 35 7/8" 41 1/4" 2 7/8"

BOTTOM LANDING – PARK  
PLAN VIEW – OVERHEAD DETAIL

A	INITIAL RELEASE	UNITS: INCHES	04/08/22				
REV.	SCALE: 1:20	TOLERANCES: DIMENSIONAL ±1/16	ANGULAR ±0.5°	PROJECTION:	DATE	DRN.BY	CHK.BY
		18920 36TH AVENUE SURREY, BC, CANADA V3Z 0P6 PH: ++1 604 594 0422 FAX: ++1 604 594 9915 <a href="http://www.garaventalift.com">http://www.garaventalift.com</a>		GSL ARTIRA APPROVAL DRAWING TUCKER FREE LIBRARY HENNIKER NH 03242 Garaventa NE		PAGE 10 of 12 93570-AD-A 90-0857-42	